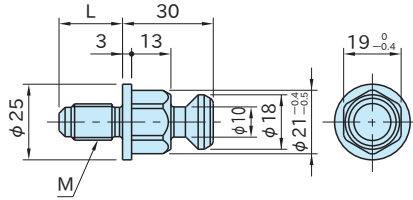


PTPD-M

CLAMPING SCREWS for BLOCK PULL CLAMPS



Body
SCM435 steel
Quenched and tempered
Black oxide finish

Part Number	M	L	Weight (g)	Proper Block Pull Clamp
PTPD12-M10	M10×1.5	18	69	PTPD12
PTPD12-M12	M12×1.75	21	75	
PTPD12-M16	M16×2	28	98	