

BJ351

CYLINDRICAL WORK SUPPORTS

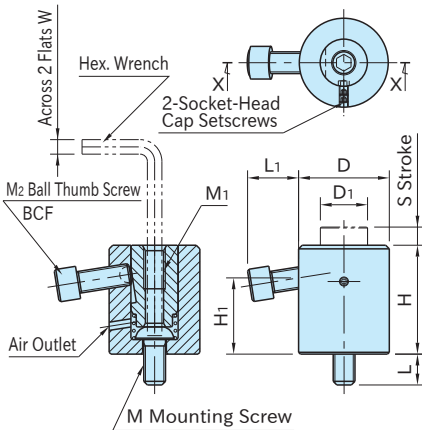


BJ351
(Ball-Thumb-Screw Style)

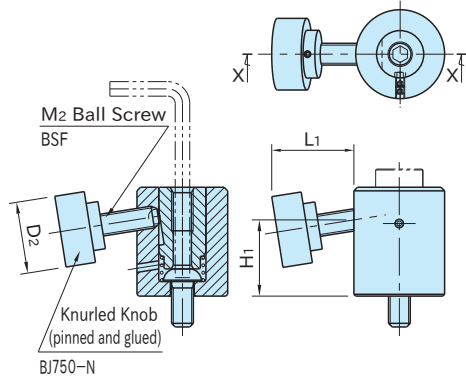


BJ351-C
(Knurled-Knob Style)

Body	Piston
S45C steel Black oxide finish	SK95 steel Quenched and tempered Black oxide finish



Section X-X



Section X-X

Note: To install, insert a hex. wrench through the piston into the mounting screw.

BJ351
(Ball-Thumb-Screw Style)

BJ351-C
(Knurled-Knob Style)

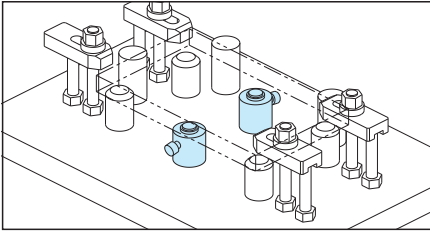
Size	H	S	M ₁	D ₁	D	M	L	W	H ₁	
BJ351 BJ351-C	06001	33	6	M 6×1 Depth 12	14	28	M 6×1	10	4	22
	08001	42	10	M 8×1.25 Depth 16	19	35	M 8×1.25	15	5	28.5
	10001	50		M10×1.5 Depth 20	22	42	M10×1.5	14	6	34
	12001	60		M12×1.75 Depth 24	26	50	M12×1.75	17	8	42
	16001	70		M16×2 Depth 32	33	60	M16×2	22	10	47

BJ351 (Ball-Thumb-Screw Style)

Part Number	L ₁	M ₂	Allowable Screw Torque (N·m)	Support Capacity (kN)	Piston Spring Force (N)	Weight (g)
BJ351-06001	14.1	M 6×1 -16L	7.5	4	10~22	150
BJ351-08001	18.8	M 8×1.25-20L	14	6	10~27	300
BJ351-10001	23.8	M10×1.5 -25L	18	7.5	14~28	540
BJ351-12001	28.5	M12×1.75-30L	22	9	15~30	865
BJ351-16001	26.5		25		15~35	1390

BJ351-C (Knurled-Knob Style)

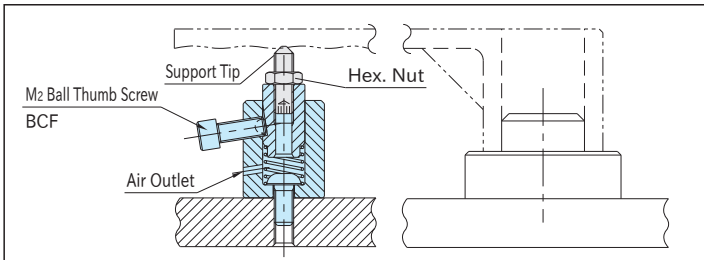
Part Number	L ₁	D ₂	M ₂	Allowable Screw Torque (N·m)	Support Capacity (kN)	Piston Spring Force (N)	Weight (g)
BJ351-06001C	22.7	24	M 6×1	1	0.6	10~22	185
BJ351-08001C	27.7	30	M 8×1.25	1.2	0.7	10~27	360
BJ351-10001C	31.8	36	M10×1.5	1.5		14~28	620
BJ351-12001C	36.8	40	M12×1.75	2	0.8	15~30	1020

How To Use**Feature**

The positive locking mechanism allows the ball-thumb-screw style to offer high support capacities.

Note

When you attach a support tip to the tapped hole through the shaft, tighten the shaft and fix it to prevent damage.



Ideal for preventing the workpiece from chattering and deflecting.