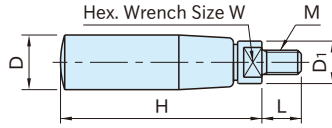


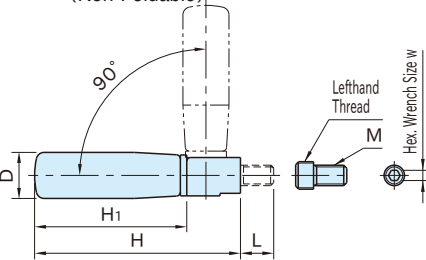
ER,FR,SFR

PLASTIC REVOLVING HANDLES



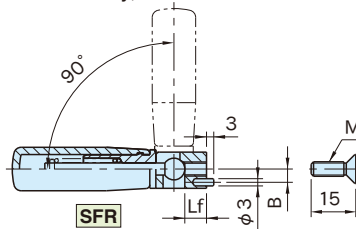
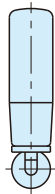
ER **ER-SUS**

(Non-Foldable)



FR

(Fold-Away, Stud)



SFR

(Fold-Away, Tap)

Type	Handle	Shank
ER FR	Polyamide plastic	Steel (SUM22)
SFR		Chrome plated
ER-SUS	Black	Stainless steel (SUS303)

ER **ER-SUS** (Non-Foldable)

Steel Shank	Stainless Steel Shank	D	D ₁	H	M	L	W	Weight (g)
Part Number	Part Number							
ER18	ER18-SUS	18	14	66	M 8×1.25	13	10	35
ER22	ER22-SUS	22	17	85	M10×1.5	14	13	75
ER28	ER28-SUS	28	23	107	M12×1.75	20	19	170

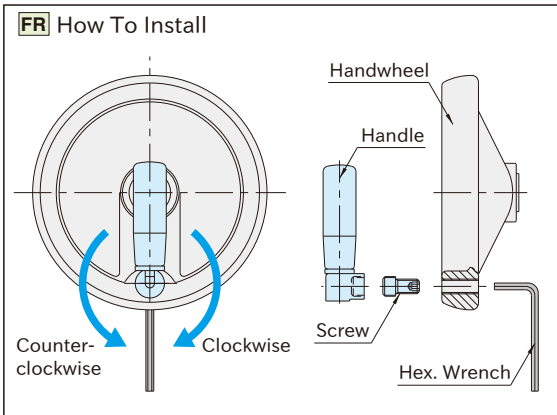
FR (Fold-Away, Stud)

Part Number	D	D ₁	H	H ₁	M	L	w	Weight (g)
FR18	18	16	81	60	M 8×1.25	13	4	80
FR22A						14		
FR22B					22	20	100.5	78
FR28	28	22	120	96				

SFR (Fold-Away, Tap)

Part Number	D	D ₁	H	H ₁	M	Lf	B	Weight (g)
SFR18	18	16	80.5	59.5	M 6×1	8.9	5.5	69
SFR22	22	20	100.5	78	M 8×1.25	7.9	7	115
SFR28	28	22	120	96		8.4	7.5	195

- All **FR** handles can be folded in 360° directions by loosening the shank.
- A hex. wrench hole is provided at the shank end of the **FR** handles, for installation.
- Do not use at locations which receive direct sunlight or outdoors.
- Use in hot or highly humid environments can deteriorate the properties of the plastic material.



- 1 Tighten the screw loosely into the handwheel in the clockwise direction until it is in a fully engaged position.
- 2 Insert a hex. wrench from the bottom into the screw and give it a 360° turn in the counterclockwise (loosening) direction.
- 3 Lock the screw using the hex. wrench and tighten the handle fully onto the screw in the counterclockwise direction.
- 4 Keep the screw locked using the hex. wrench and give the handle a 360° turn in the clockwise direction.
- 5 Keep the screw locked using the hex. wrench and turn the handle to a desired position in the clockwise direction.
- 6 Keep the handle locked and turn the hex. wrench in the clockwise direction to tighten the screw.

Note : It is recommended that the folding section be greased periodically.